

A modern, single-story house with a mix of tan stucco and stone masonry. Two prominent stone pillars flank the entrance, which has a wooden door with square windows. The house features flat roof sections and large windows. The background shows a desert landscape with a large sand dune under a clear blue sky.

Signature

The Overture

The Symphony Collection at Signature Estates



Elevation A

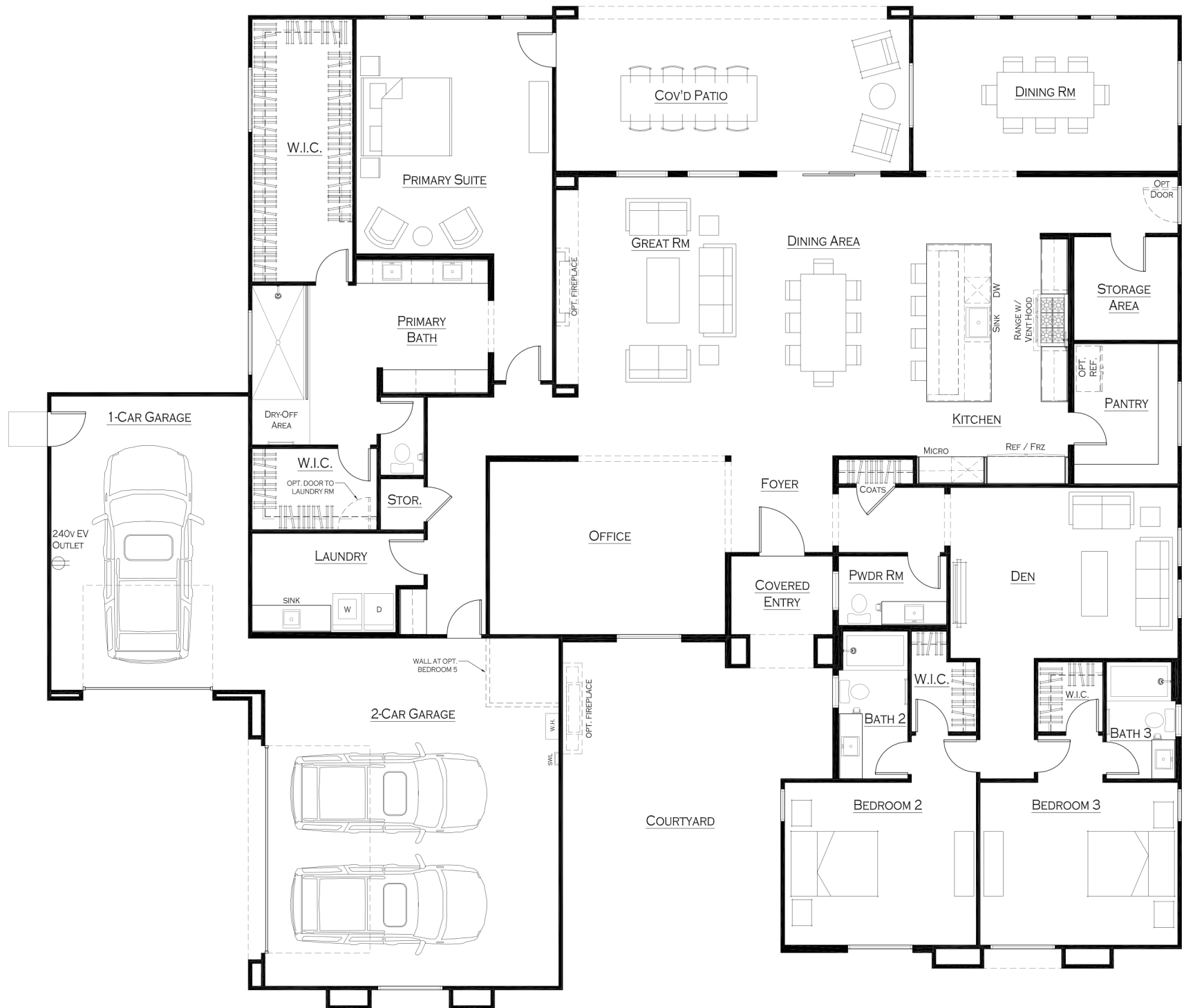


Elevation B



Elevation C

Signature

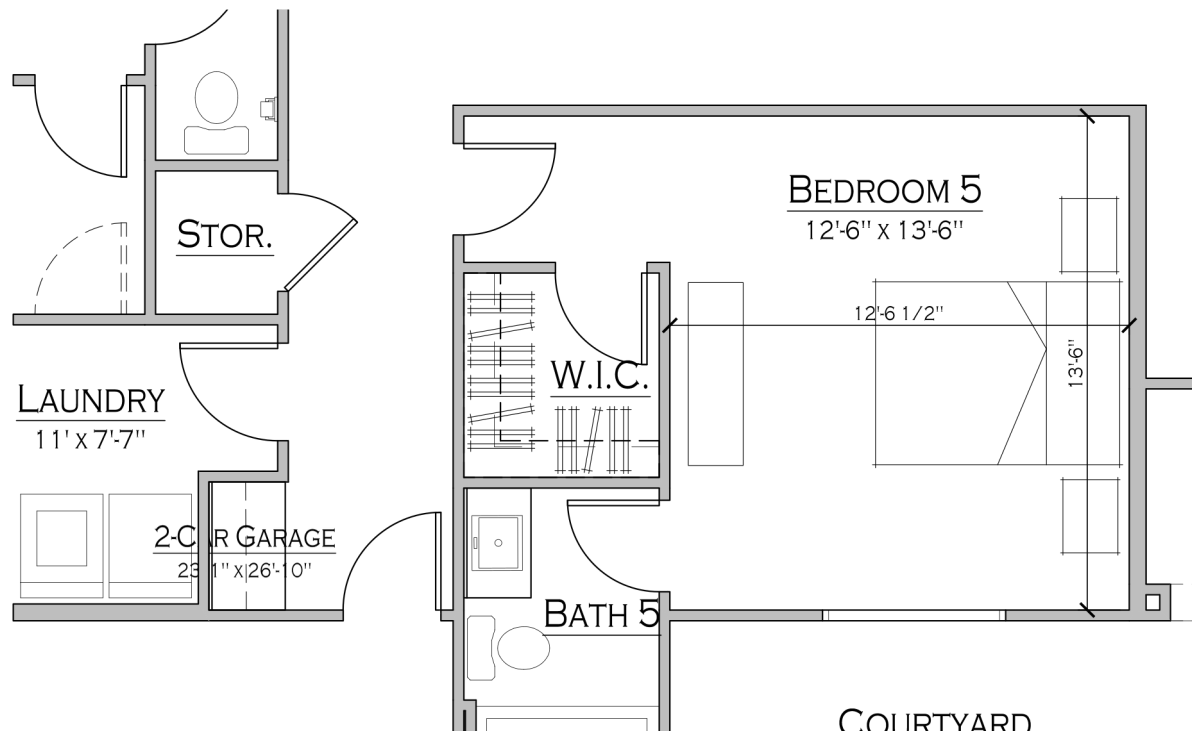


Standard Plan (3780 sq ft) | Single-Story

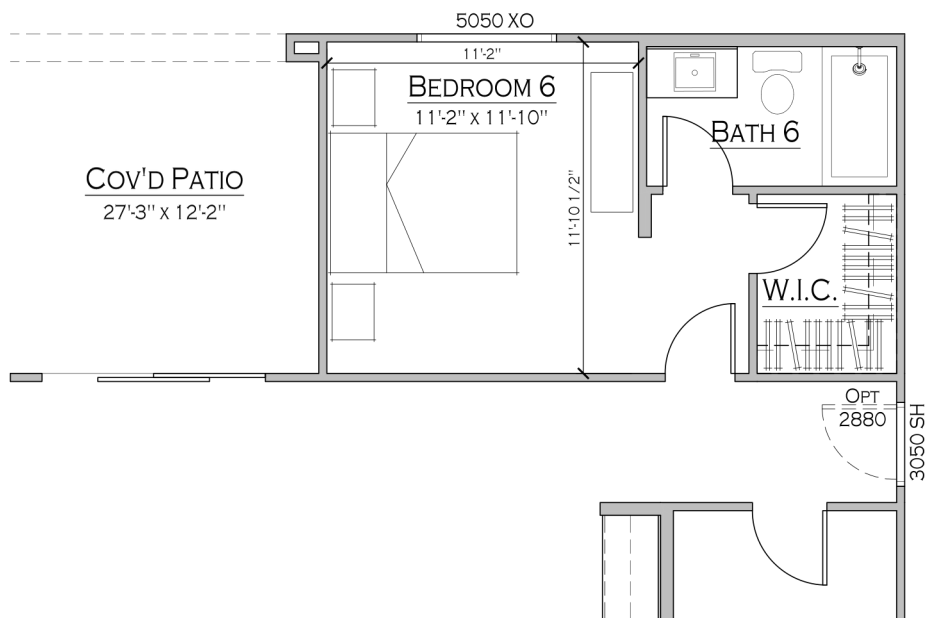
3 Bedrooms | 3.5 Bathrooms | 3 Car Garage

Signature

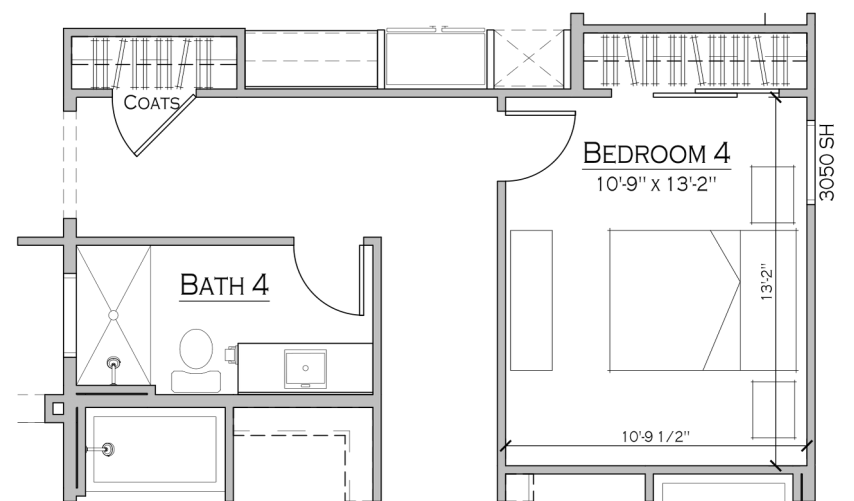
Available Plan Options



BEDROOM 5 AT OFFICE (+30 SF)

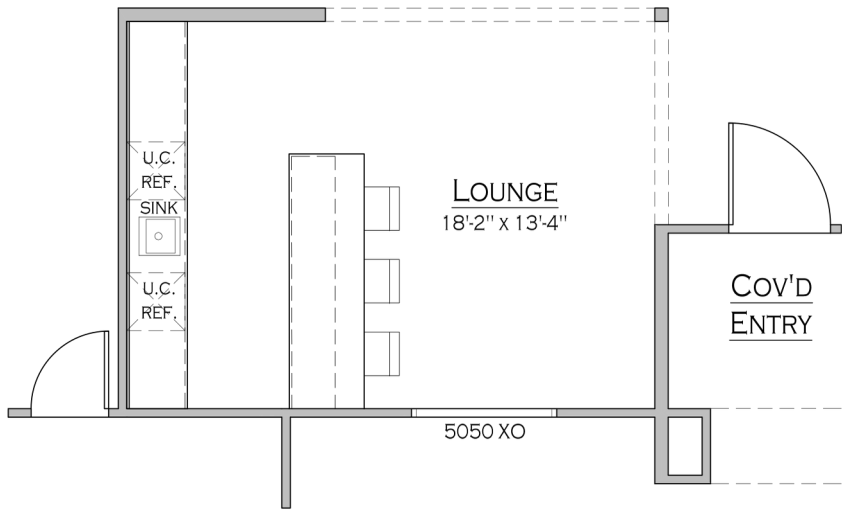


BEDROOM 6 AT DINING ROOM

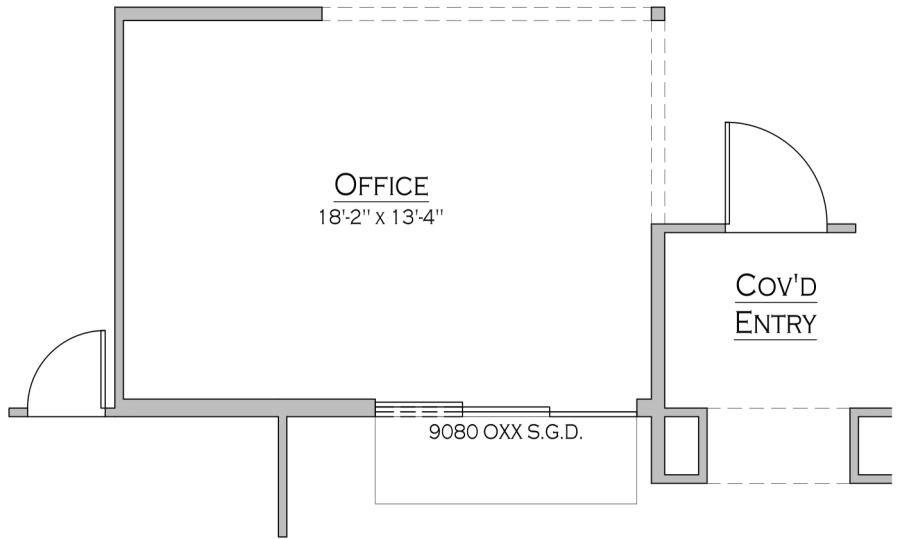


BEDROOM 4 AT DEN

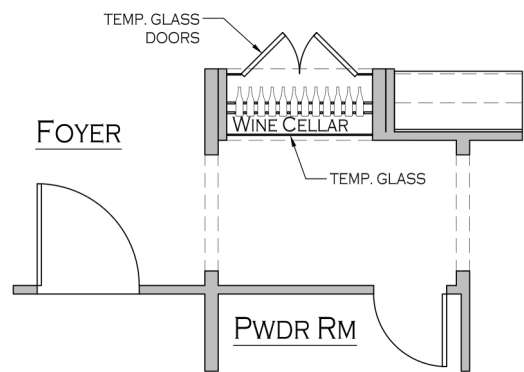
Signature



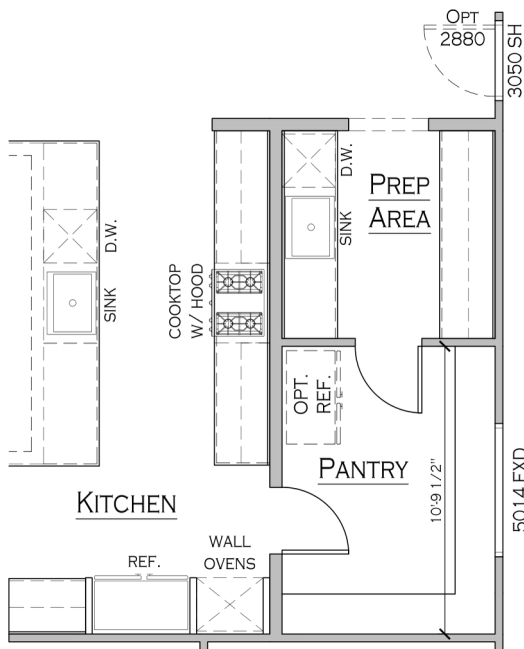
WET BAR AT OFFICE



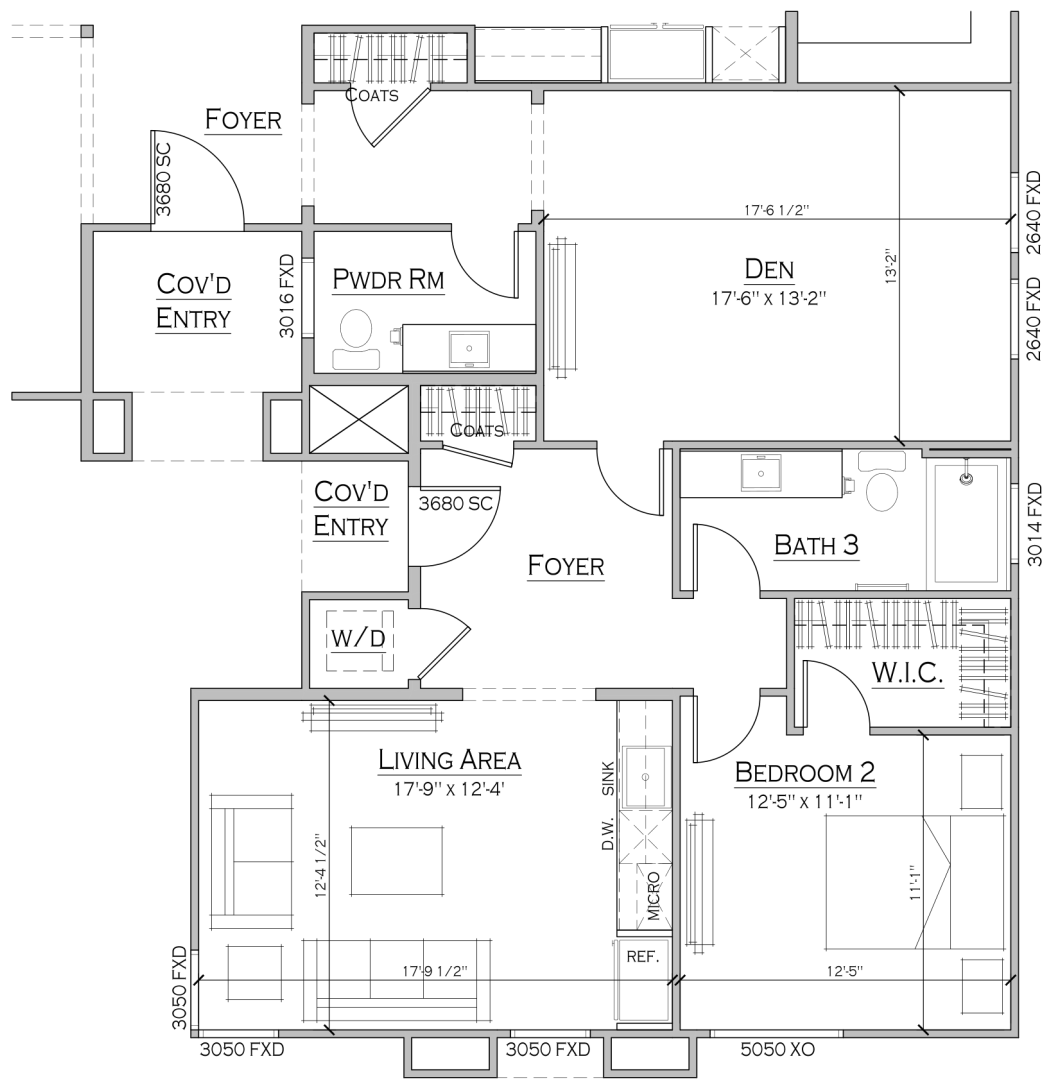
MULTI-PANEL SLIDING GLASS
DOORS AT OFFICE



WINE CELLAR

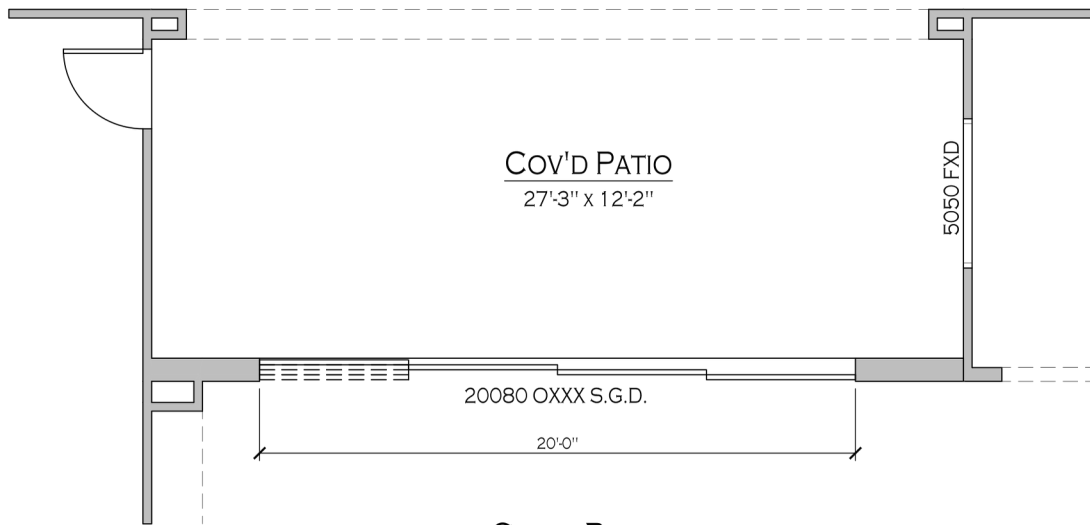


PREP KITCHEN

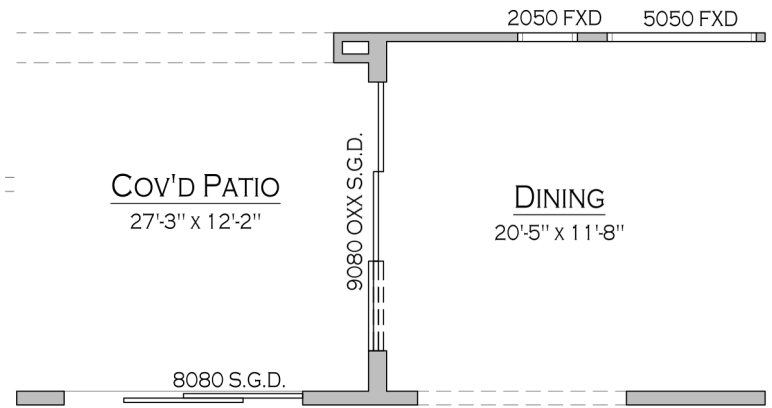


MULTI-GEN

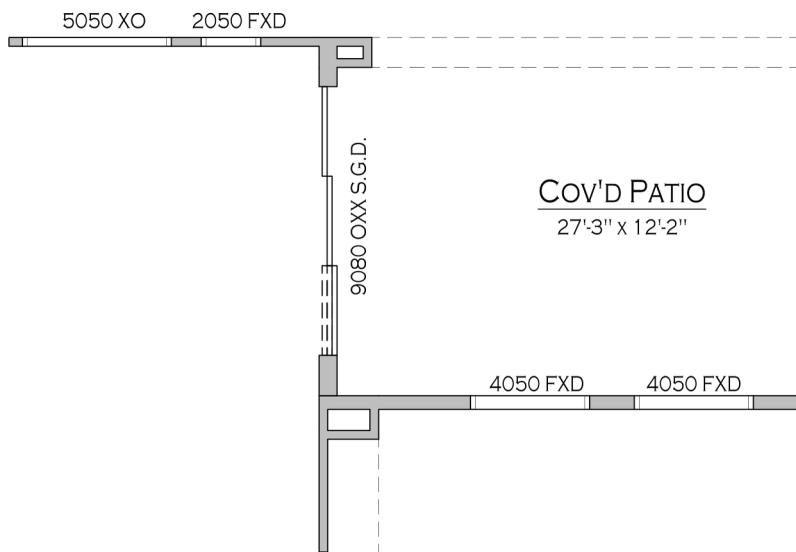
Signature



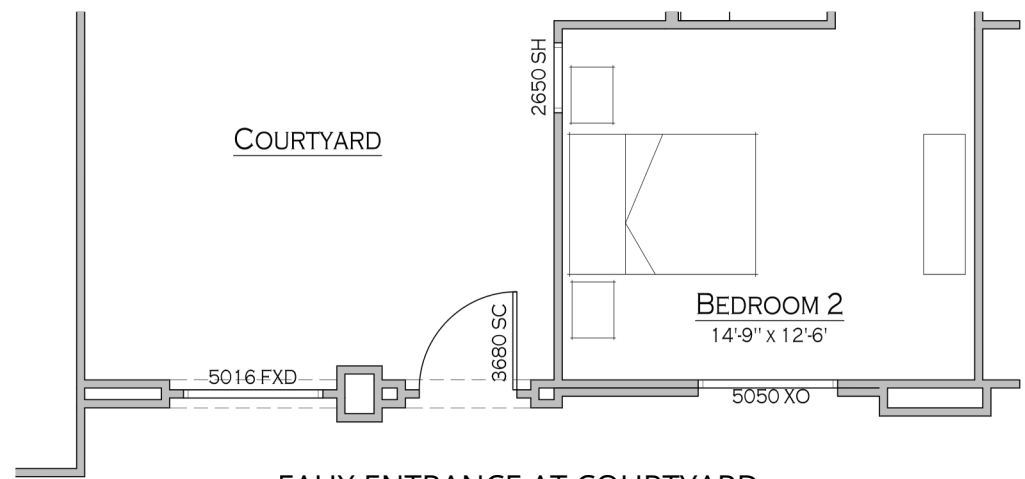
GREAT RM
MULTI-PANEL SLIDING GLASS
DOORS AT GREAT ROOM



GREAT RM
MULTI-PANEL SLIDING GLASS
DOORS AT DINING ROOM

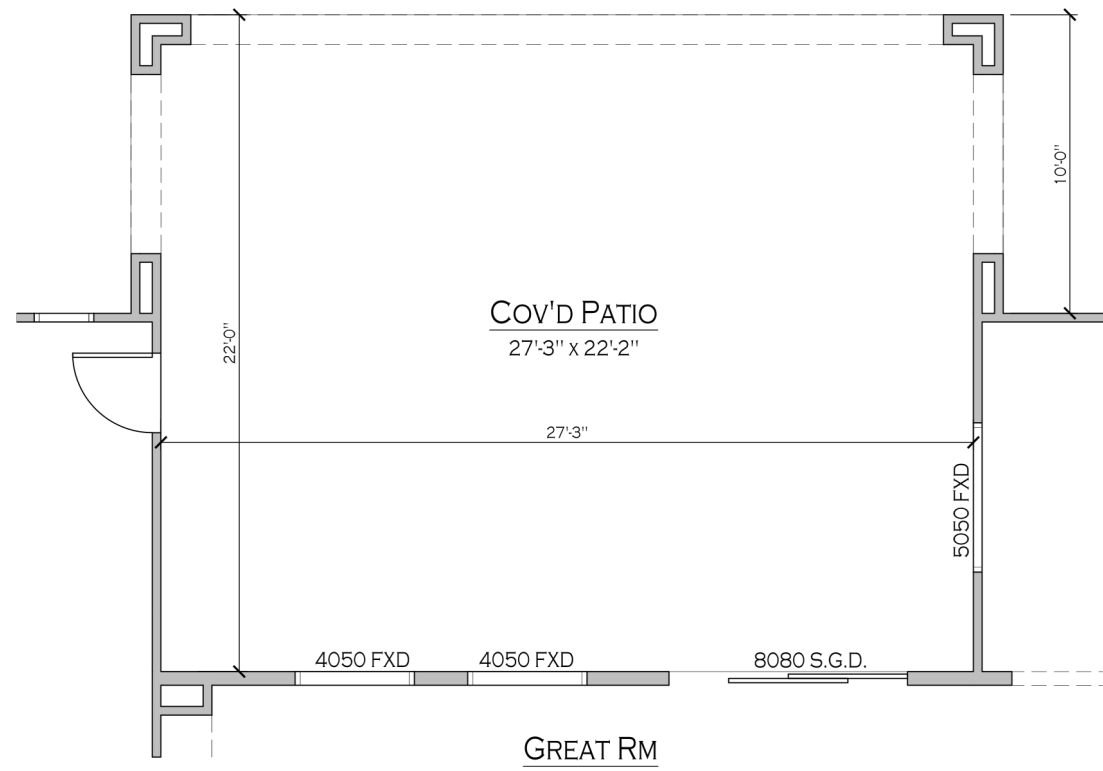


MULTI-PANEL SLIDING GLASS
DOORS AT OWNER'S SUITE

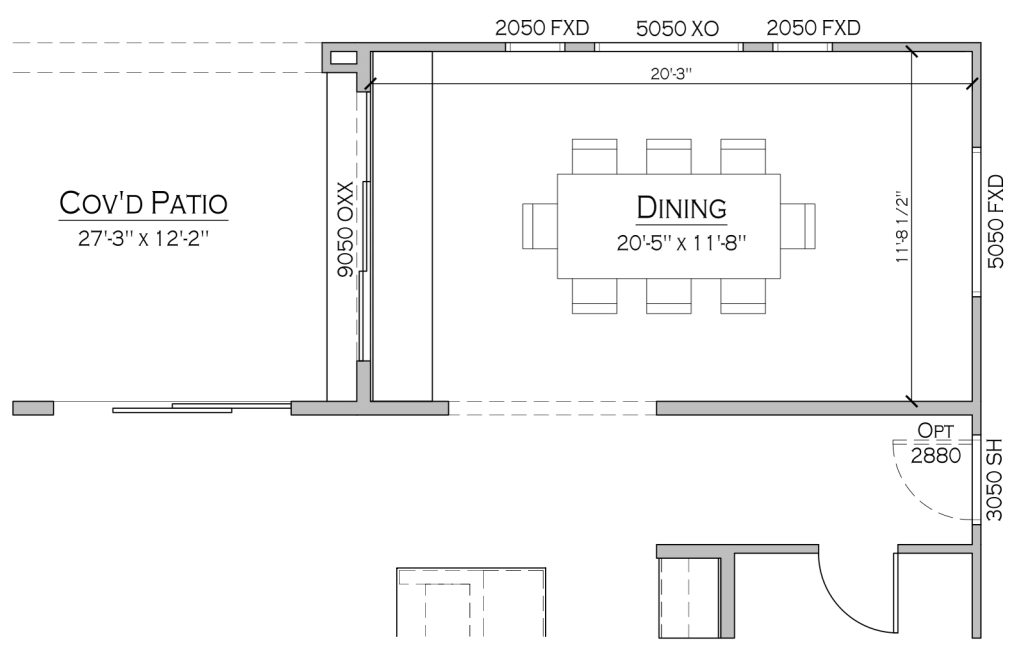


FAUX ENTRANCE AT COURTYARD

Signature



EXTENDED COVERED PATIO



WET BAR AT DINING ROOM

Signature

Standard Features

- Solar
- 10-12' Ceilings
- 8' Doors Throughout
- 8' Insulated Garage Doors
- Luxury Appliance Package
 - 60" Built-In Refrigerator
 - 48" 8-Burner Range with Double Oven
 - Under-Counter Microwave
- Modern Cabinetry
 - 6" Cabinet Pulls
 - Soft-Close Cabinets
- Quartz Countertops
- 12 x 24" Modern Tile
- Technology Package
 - Ring Doorbell
 - Ecobee Smart Thermostat
 - MyQ Garage Opener
 - Electric Vehicle Outlet
- Tankless Water Heater
- 5-1/2" Baseboards
- Moen Plumbing Fixtures Throughout
- Undermount Sinks Throughout
- Backlit Mirrors
- 3 Covered Patios

Options

- Bedroom 5 at Office (+30 SF)
- Bedroom 6 at Dining Room
- Bedroom 4 at Den
- Wet Bar at Office
- Multi-Panel Sliding Glass Doors at Office
- Wine Cellar
- Prep Kitchen
- Multi-Gen
- Multi-Panel Sliding Glass Doors at Great Room
- Multi-Panel Sliding Glass Doors at Dining Room
- Multi-Panel Sliding Glass Doors at Owner's Suite
- Faux Entrance at Courtyard
- 4-Car Garage
- Freestanding Tub at Owner's Tub
- RV Garage
- Courtyard Wall
- Extended Covered Patio
- Wet Bar at Dining Room



Signature

Signature

Browse our collections at signaturehomes.com

Building
Locally
since
1978

Contact Sales

Terran Phyfer
Sales Advisor

BS.0145513

702.919.4256

terranphyfer@signaturehomes.com

